



5. Zabbix

Zabbix
Zabbix

Zabbix

Zabbix

DHCP

IP



Zabbix

Zabbix

OpenSUSE

Zabbix	OpenSUSE
2.2.0	12.3

- vmdk (VMware / Virtualbox)
- OVF (Open Virtualisation Format)
- KVM
- CD ISO
- HDD /

- [ISO](#)
- Xen
- Microsoft VHD
- USB

MySQL

Zabbix

Web

[SUSE Studio](#)

- **SUSE**

OpenSUSE

- **MySQL**

- 가
- InnoDB

- **IP**

IP

DHCP

IP

-
- `/etc/sysconfig/network/ifcfg-eth0`

• **BOOTPROTO**

• **IPADDR NETMASK**

- `/etc/sysconfig/network/routes` 192.168.1.1 - -
- ()

• **rcnetwork restart**

DNS

`/etc/resolv.conf`

가

192.168.1.2

yast

-

UTC

`/usr/share/`

zoneinfo

`/etc/localtime`

:

```
cp /usr/share/zoneinfo/Europe/Riga/etc/localtime
```

-

- IP DHCP
- **fping** 4710 **zabbix** - suid , Zabbix
가
- ntpd
- Zabbix 가

- **Zabbix**

Zabbix

-

:

- root:zabbix
- zabbix:zabbix

:

- root:zabbix
- zabbix:zabbix

Zabbix Web :

- Admin:zabbix

Web Web Web (' Zabbix → [] [Web]).

- MySQL;
- zabbix_server.conf;
- zabbix.conf.php.

-

- / etc
- Zabbix / var / log / zabbix
- Zabbix Web / usr / share / zabbix
- **zabbix** / var / lib / zabbix

- **Zabbix**

- Zabbix Web "Zabbix 2.2"
- Web Zabbix / 가 (/ etc /

php5 / apache2 / php.ini

가

.)

Web

가

•

-

CD

가

```
mysqldump zabbix | bzip2 -9> dbdump.bz2
```

dbdump.bz2

```
bzcat dbdump.bz2 | mysql zabbix
```

Zabbix 가

- Web

Web

가

- 127.0.0.1
- 192.168.0.0/16
- 10.0.0.0/8
- ::1

(/) Web / zabbix

http:// <host>

http:// <host> / zabbix

Web

/ etc / apache2 / conf.d / zabbix.conf

Web

SSH

```
service apache2 restart
```

-

22 (SSH) 80 (HTTP) 2

가

SuSEfirewall2

, Zabbix iptables

```
SuSEfirewall2 open EXT TCP zabbix-trapper zabbix-agent
```

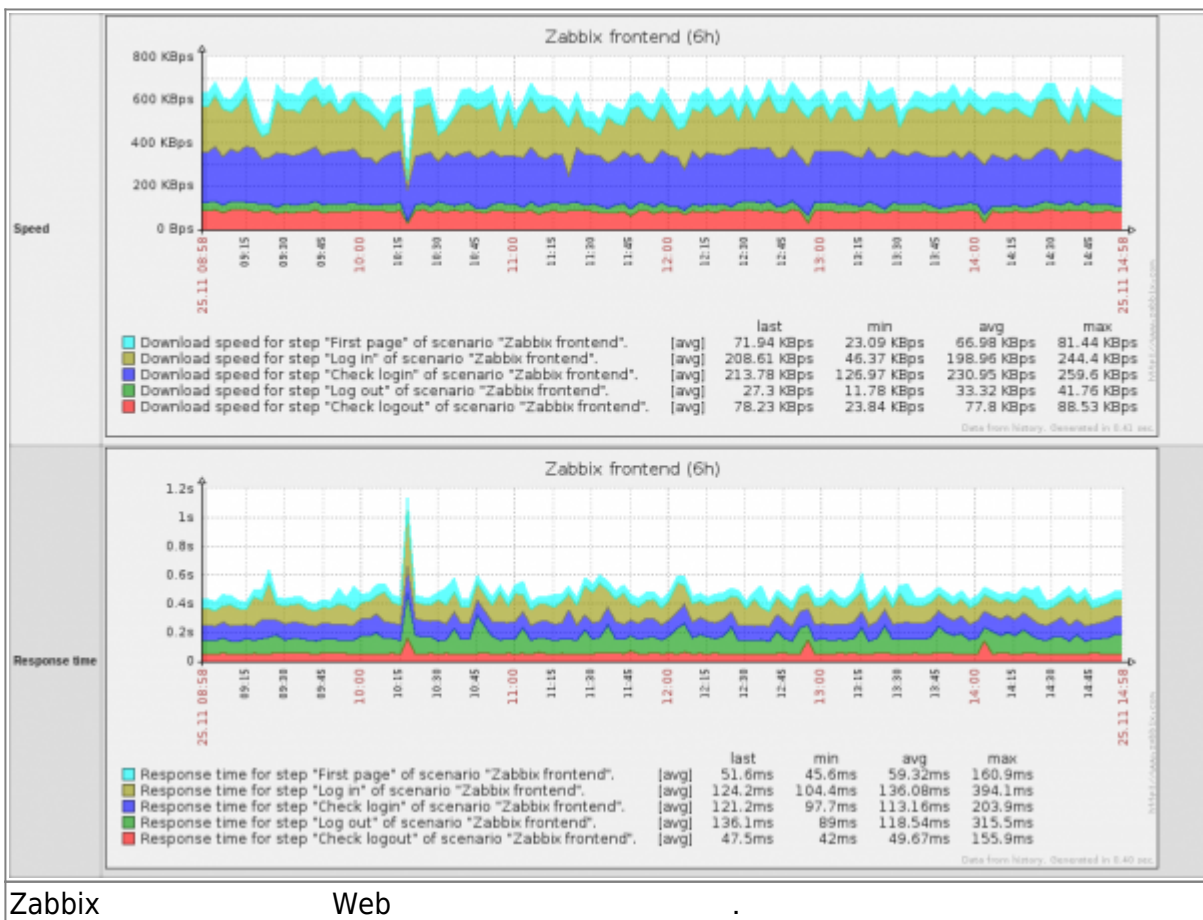
SUSEfirewall2 start

- 가

Zabbix

- SNMP
- IPMI
- Web
- SSH2
- IPv6

Zabbix
Zabbix Web Web



Zabbix Web

Web

가

- , init

init 가 . Zabbix

```
service zabbix_ server status
rczabbix_ server status
```

```
/etc/init.d/zabbix_ server status
```

server Zabbix

agentd

-

```
/ var / lib / zabbix / bin Zabbix
```

```
10 crontab
```

```
가 가 / var / log / zabbix / server_problems.log
```

Zabbix

crontab가

- 가

가

가

fdisk

. root

```
fdisk / dev / sda
```

```
sda fdisk
```

```
u
```

c DOS

가

가

가

fdisk

```
d
n
p
1
(accept default 63)
(accept default max)
```

가 ()

w

가 ().

```
resize2fs / dev / sda1
```

가가

- Xen

Xen

```
xm create -c file-with-suffix.xenconfig
```

Xen

- http://en.opensuse.org/openSUSE:How_to_use_downloaded_SUSE_Studio_appliances#Using_Xen_guests
- http://old-en.opensuse.org/SUSE_Studio_Xen_Howtos

XenServer

Xen Citrix Xenserver
가

- 가
- UUID

```
xe vdi-list params = all
```

- 가 가 name-label
- 가

```
xe vdi-import filename = "image.raw"uuid = "<UUID>"
```

Brian Radford

- VMware

vmdk VMware Player, ESX, ESXi
vSphere VMware

- **HDD / flash** ()

http://en.opensuse.org/openSUSE:SUSE_Studio_Disc_Image_Howtos

-

- **Windows**

Windows

[7-zip](#)

- **IPv6**

가 IPv6 (,) 가
, IPv6 . IPv6 ,/etc/sysctl.conf
`net.ipv6.conf.all.disable_ipv6 = 1` 가

From:

<http://manual.oplab.co.kr/> - **Zabbix Manual**

Permanent link:

<http://manual.oplab.co.kr/doku.php/manual/appliance>

Last update: **2016/11/29 11:31**

